

CAPABILITY STATEMENT

CONVEYOR INNOVATIONS INTERNATIONAL PTY LTD

COMPANY OVERVIEW

Conveyor Innovations International (CII) “we”, “our” us”, are Members of the Emerald Community.

CII is a private company who have the support of Universal Bearings, a business with locations in Melbourne, Sydney, and Brisbane. Their annual revenue exceeds \$10 million. Universal Bearings is a significant shareholder in our business and has provided us with significant capacity.

Predominantly, we manufacture and supply conveyor idler rollers for materials handling conveyors which are used in mines and ports. Our conveyor idler rollers were created with the goal to outperform all other conveyor idler rollers now on the market.

Our unique product features include a high-quality, dependable conveyor idler roller and precision CNC-machined end-caps with large bearings and steel shaft connections.

Shells are made of standard-grade carbon steel (275 MPa), VitreSteel (350 MPa), and composite HPE and UHMWPE.

Up to 50% lighter than standard rollers Plus benefits for WHS. CII Rollers consistently demonstrate Increased production, and decreased unscheduled downtime, in mines and ports.

With more than 19 years experience in the sector, CII provides enhanced performance, increased reliability, and significant cost savings. Performance improvement is still at the forefront of our technology.

The iMining Roller App, created by CII, tracks conveyor idler performance across mine locations.

HEAD OFFICE

13 Kyle Street
Emerald Queensland 4720

PO Box 1937
Emerald QLD 4720

MANUFACTURING

Emerald, Queensland

Managing Director
Colin Longton

Technical Director
Justin Geddes

ACN 111 471 802
EST 2004

Tel 07 4986 4550
Fax 07 5575 2017
Email enquiries@ci-int.com

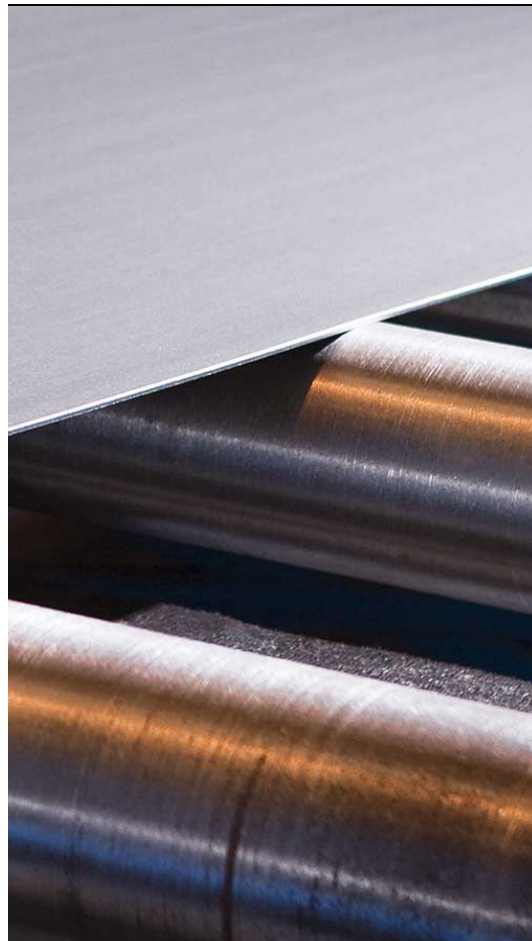
Please visit our Website:

CI-INT.COM



QUALITY & PRECISION

CONVEYOR INNOVATIONS INTERNATIONAL



THE WAY WE WORK

Manufacturing Locally

CII are dedicated to the elimination of the fundamental causes of why conventional rollers fail.

Our manufacturing equipment is both specialised and current.

Benefits of using a local manufacturer like CII:

- Capacity to offer a localised service and quick response.
- Rollers can be manufactured and delivered to site quickly.
- By manufacturing rollers locally, we reduce the amount of inventory that is needed by mines and ports to be kept on site.
- Rollers are not left out in the sun for extended periods of time before they are used which itself often contributes to conveyor idler roller failure.
- The costs of delivery of rollers to site is local.
- For the purposes of workplace health and safety, our roller end-caps predominantly have a split colour scheme, (green | yellow) - at a glance you can see whether the roller is rotating.
- By using a quality product, this reduces labour-intensive maintenance costs and eliminating unplanned stoppages.

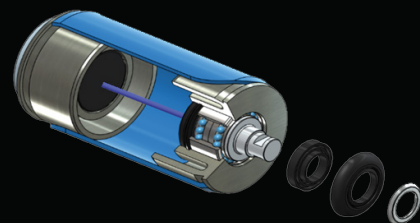
All of these factors should result in significant savings for mines and ports.

CII ROLL APP

CII roll App is developed for use by iPads to enable mine and port personnel to record failures and to properly allocate their resources for roller change outs. The information is retained within the system so at glance you check both conveyor and idler roller performance.

OUR CLIENTS

These include BMA-BHP mines, Sojitz, Harmony Gold, Idemitsu.





MEET THE DIRECTORS

CONVEYOR INNOVATIONS INTERNATIONAL

COLIN LONGTON

Colin is our Managing Director, backed by an impressive 40 years professional career (B.Com). Colin brings a wealth of experience to CII with an extensive background in both consultancy firms and business start-ups. His experience covers a wide range of senior management, consultancy and business operations.

Colin's experience covers a range of industries from senior management to banking, manufacturing, business operations, telecommunications, mining and construction, in the capacity of organisational improvement, accelerating business performance and human resources.

JUSTIN GEDDES

Justin is our Company Director, and holds an LLM. With over 33 years business experience, Justin deploys a multi-focused approach in product design and production, technical product support, daily operations and company administration.

Justin joined CII following an extensive career in law (LLM), Corporate and Commercial. His multi-focused role incorporates Technical Operations, product design and production. Justin provides valuable technical support for our entire range of products, plant management, daily operations and administration.

Justin has an extensive legal background - A valuable asset to the future of our Conveyor Innovations.

MEET THE TEAM

AT CONVEYOR INNOVATIONS

INNOVATION
DRIVING
PERFORMANCE

CII.AU

COLIN LONGTON

Colin Longton | B.Comm
Managing Director



JUSTIN GEDDES

Justin Geddes | LLM
Technical Director





MANAGEMENT OBJECTIVES

CII OBJECTIVES

Ultimately, CII aims to be the leading supplier of reliable conveyor components, solutions and specialised engineering services across Australia, and Internationally.

To achieve this goal we have been developing both quality products and sound management systems.

These systems extend to:

- Quality assurance;
- SmartTrack software to track components and manufacturing history of rollers history

SKILLED STAFF

We recognise the importance of quality skilled staff, advocating internal and external training to enhance all skill levels.

We deliver specialised design, manufacturing and supply of innovative conveyor idler roller solutions.

We have developed a model for developing individual skills and ongoing skills development.

For many people with a great idea, the biggest hurdle can be finding someone who believes in you. With the help of BHP, many Queenslanders are turning their ideas and innovations into businesses with a bright future. To find out more, head over to BHP.com - community programs.

KNOWLEDGE

We are applying knowledge management can be applied to conveyor systems. This involves the continual identification of key components that conveyor idler roller failure.

This knowledge includes the ongoing development of solutions and optimisation tools increase product quality as well as to generate usable accurate data to improve performance.



PRESS & MEDIA

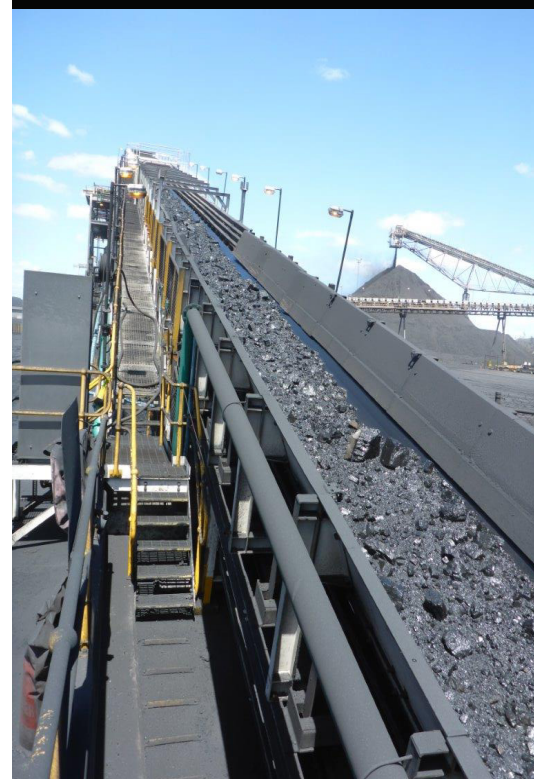
CII featured in BHP's Advertising campaign which aired on Australian National Television, featuring our operations employees, and supporting local businesses in central Queensland.

"Support for small business with great ideas. To me that's big".

Justin Geddes, Local BHP Supplier, Central Queensland.

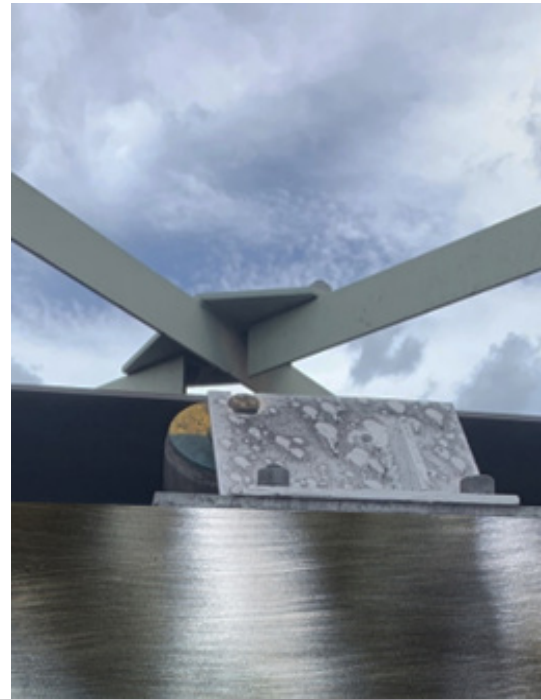
For more information, visit our Website:

CI-INT.COM





MANAGEMENT SYSTEMS



TEHNOLOGICAL SOLUTIONS

CII APP

The CII Roll App maps your entire conveyor system for condition monitoring of all components, and production analysis.

CII Roll-App is an Asset Management Initiative providing the complete condition monitoring database. Most importantly it assists to reduce maintenance costs.

Records Activity CII Roll-App is the new smart app to record Maintenance Activity – failure to components, change-outs and then uploads the data into the cloud to prioritise maintenance.

Records daily inspections and then generates a report for each conveyor. The data is entered during inspection and then uploaded to the cloud for examination by the site office, stores and planning.

Excel Spreadsheet Data is downloadable in summary form into an excel spreadsheet. The data records the failed rollers by type and SAP number. Also, it records the quantity and type of roller required and those that need to be replaced on each conveyor. It's never been so efficient and easy - saving you valuable time.

MANUFACTURING

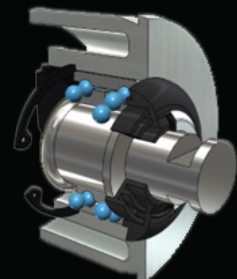
We have over the last 10 years developed lean manufacturing and quality assurance ensuring that all our products are of high quality when they leave our factory, and are delivered mines and ports in a timely manner.

VALUE ADD

Innovation increases productivity. The future in Conveyor Innovation is here. We are at the forefront. The most sophisticated technology for reliability and value added performance on the market.

CII BRANDS

iRoller
iServices
iMonitor
iMining





RESEARCH & DEVELOPMENT

TECHNICAL ANALYSIS

About 20% of generated income is directed towards Research and Development.

Areas that we have been concentrating on are:

- Refinement of seal types – because the ingress of debris into bearings is a leading cause of failure of all idler roller types;
- Quality composite shells and end-caps for this shell type;
- The iRoller which is a smart roller; and the development of its software.

The iRoller developed in conjunction with Griffith University, has a small (interchangeable) circuit board attached to an end-cap (like a donut) that can transmit signals in long range Bluetooth 5, that can be read in real time by mine inspection personnel on our software that has been developed for that purpose.

The signals can be collected by a controller that can be installed on at the tail end and transmitted into the cloud.

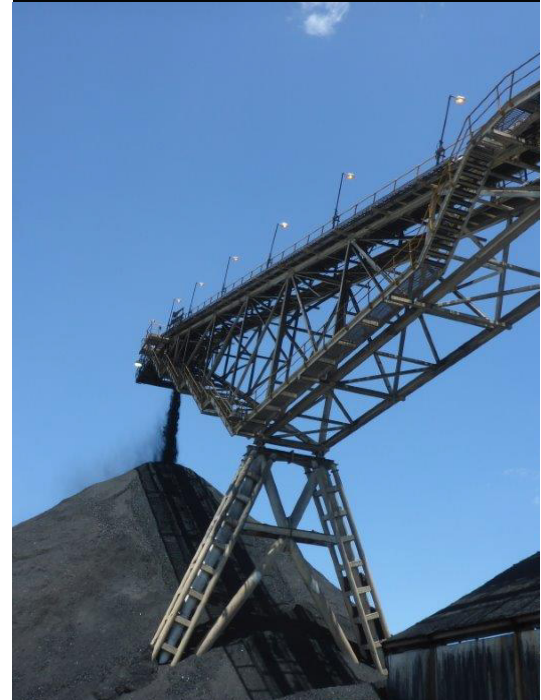
Although the iMonitor boards will be relatively inexpensive, they can be reset and reused. Their firmware is upgradeable in situ.

CII LOCATIONS

Operations - Emerald . QLD
Manufactured in Emerald, Queensland

VISIT : CI-INT.COM

Tel 07 4982 4814
Fax 07 5575 2017
Email enquiries@ci-int.com



CII ROLL-APP HAS ARRIVED!

A sophisticated data base for mapping your entire conveyor system.





THE FUTURE

CONVEYOR TECHNOLOGY

INNOVATION
DRIVING
PERFORMANCE

CI-INT.COM

2023 INNOVATION DRIVING PERFORMANCE

CI-INT.COM